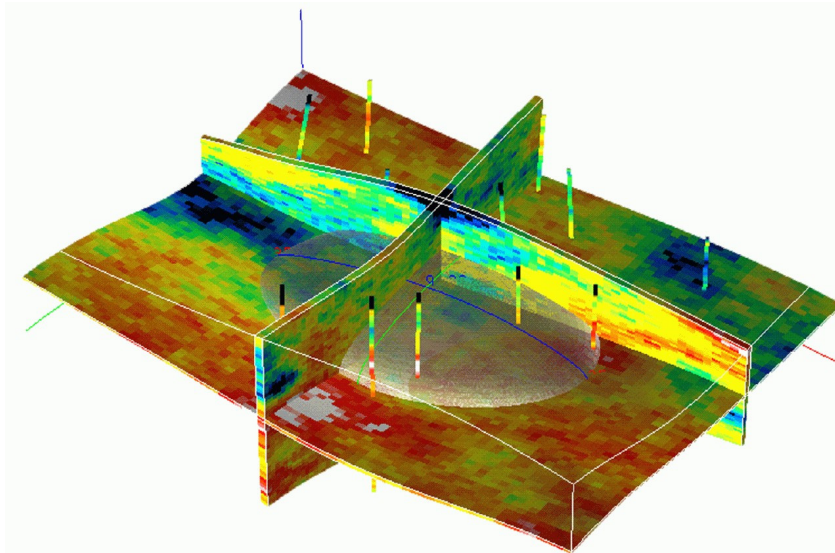
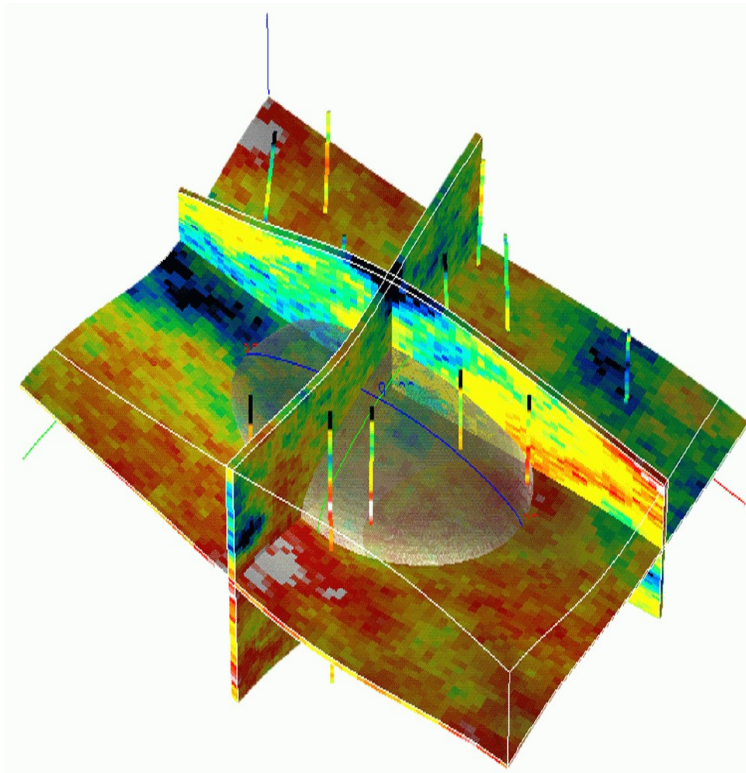


**K & K OIL AND GAS GmbH**



## **TECHNICAL REFERENCES**

**K & K Team and Partners**



## References USA

References Europe

References Iran

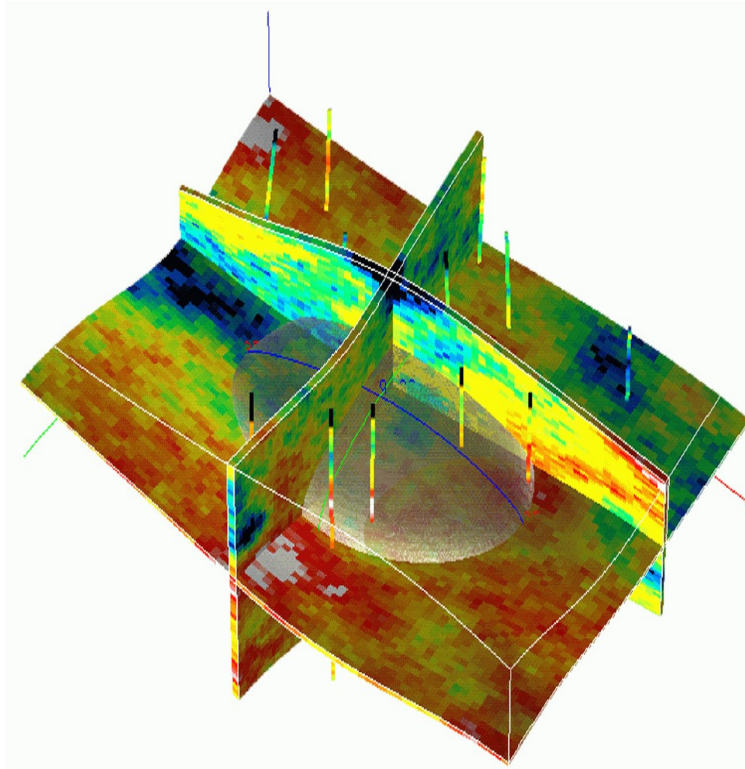
References Libya

References Russia

## References USA (1/1)

Client	Field Name	Project Description	Ended in	Client contact
Aurora Oil & Gas	Crossroads	<ul style="list-style-type: none"> <li>• Reinterpretation of Seismic Data</li> <li>• Reinterpretation of Petrophysical Data</li> <li>• Reinterpretation of Geology</li> <li>• Set-up of Static Geomodel based on reinterpreted Data</li> <li>• Set-up of Dynamic Simulation Model</li> <li>• History Match,</li> <li>• Elaboration of Development Scenarios</li> <li>• Detailing of Master Development Plan</li> </ul>	<ul style="list-style-type: none"> <li>• 2005</li> </ul>	<ul style="list-style-type: none"> <li>• John Miller; Executive Vice President Aurora Oil &amp; Gas; jmiller@auroraogc.com; 4110 Copper Ridge Drive Suite 100; Traverse City; MI 49684</li> </ul>
Aurora Oil & Gas	Waybash	<ul style="list-style-type: none"> <li>• Reinterpretation of Seismic Data</li> <li>• Reinterpretation of Petrophysical Data</li> <li>• Reinterpretation of Geology</li> <li>• Set-up of Static Geomodel based on reinterpreted Data</li> <li>• Set-up of Dynamic Simulation Model</li> <li>• History Match,</li> <li>• Elaboration of Development Scenarios</li> <li>• Detailing of Master Development Plan</li> </ul>	<ul style="list-style-type: none"> <li>• 2006</li> </ul>	<ul style="list-style-type: none"> <li>• John Miller; Executive Vice President Aurora Oil &amp; Gas; jmiller@auroraogc.com; 4110 Copper Ridge Drive Suite 100; Traverse City; MI 49684</li> </ul>

# Agenda



References USA

References Europe

References Iran

References Libya

References Russia

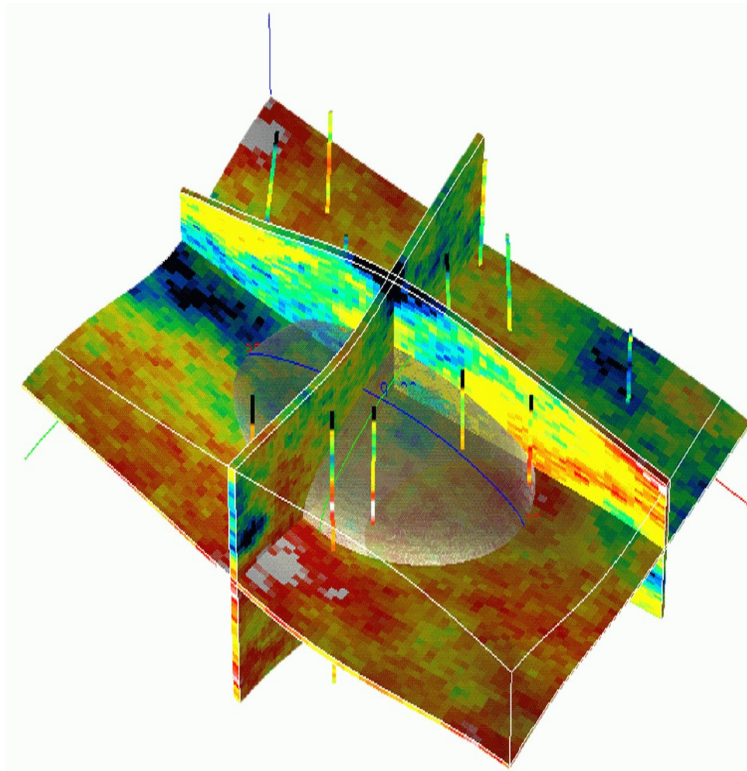
## References Europe (1/2)

Client	Field Name	Project Description	Ended in	Client contact
E.ON Földgaz Hungary	Maros 1	<ul style="list-style-type: none"> <li>• Reinterpretation of Seismic Data</li> <li>• Reinterpretation of Petrophysical Data</li> <li>• Reinterpretation of Geology</li> <li>• Set-up of Static Geomodel based on reinterpreted Data</li> <li>• Set-up of Dynamic Simulation Model</li> <li>• History Match,</li> <li>• Elaboration of Injection Scenarios for Underground Gas Disposal (UGS)</li> </ul>	<ul style="list-style-type: none"> <li>• 2009</li> </ul>	<ul style="list-style-type: none"> <li>• Mariann Györgyne Nemeth; Head of Reservoir Management; Gyorgyne.nemeth@eon-foldgaz.com; Roosevelt tér, 1051-Budapest, Hungary</li> </ul>
TAQA Netherlands (subsidiary of Abu Dhabi National Energy Company)	Bergermeer	<ul style="list-style-type: none"> <li>• Reinterpretation of Seismic Data</li> <li>• Reinterpretation of Petrophysical Data</li> <li>• Reinterpretation of Geology</li> <li>• Check of Static Geomodel based on reinterpreted Data</li> <li>• Check of Dynamic Simulation Model</li> <li>• Check of History Match</li> </ul>	<ul style="list-style-type: none"> <li>• 2009</li> </ul>	<ul style="list-style-type: none"> <li>• Wouter Botermans; Reservoir Engineer; wouter.botermans@taqa.eu Prinses Margrietplantsoen 40; P.O. Box 11550 2502 AN The Hague, Netherlands</li> </ul>

## References Europe (2/2)

Client	Field Name	Project Description	Ended in	Client contact
E.ON Földgaz Hungary	Puszaederics	<ul style="list-style-type: none"> <li>• Reinterpretation of Seismic Data</li> <li>• Reinterpretation of Petrophysical Data</li> <li>• Reinterpretation of Geology</li> <li>• Set-up of Static Geomodel based on reinterpreted Data</li> <li>• Set-up of Dynamic Simulation Model</li> <li>• History Match,</li> <li>• Elaboration of Injection Scenarios for Underground Gas Disposal (UGS)</li> </ul>	<ul style="list-style-type: none"> <li>• 2010</li> </ul>	<ul style="list-style-type: none"> <li>• Mariann Györgyne Nemeth; Head of Reservoir Management; Gyorgyne.nemeth@eon-foldgaz.com; Roosevelt tér, 1051-Budapest, Hungary</li> </ul>

# Agenda



References USA

References Europe

**References Iran**

References Libya

References Russia

## References Iran (1/3)

Client	Field Name	Project Description	Ended in	Client contact
RIPI (subsidiary of National Iranian Oil Company)	Yadavaran	<ul style="list-style-type: none"> <li>• Reinterpretation of Seismic Data</li> <li>• Reinterpretation of Petrophysical Data</li> <li>• Reinterpretation of Geology</li> <li>• Set-up of Static Geomodel based on reinterpreted Data</li> <li>• Set-up of Dynamic Simulation Model</li> <li>• History Match,</li> <li>• Elaboration of Development Scenarios</li> <li>• Detailing of Master Development Plan</li> </ul>	<ul style="list-style-type: none"> <li>• 2005</li> </ul>	<ul style="list-style-type: none"> <li>• Dr. Kambiz Sadaghiani; Executive Vice President RIPI; ksadaghiani@yahoo.com</li> </ul>
RIPI (subsidiary of National Iranian Oil Company)	Alborz	<ul style="list-style-type: none"> <li>• Reinterpretation of Seismic Data</li> <li>• Reinterpretation of Petrophysical Data</li> <li>• Reinterpretation of Geology</li> <li>• Set-up of Static Geomodel based on reinterpreted Data</li> <li>• Set-up of Dynamic Simulation Model</li> <li>• History Match,</li> <li>• Elaboration of Development Scenarios</li> <li>• Detailing of Master Development Plan</li> </ul>	<ul style="list-style-type: none"> <li>• 2006</li> </ul>	<ul style="list-style-type: none"> <li>• Dr. Mohammad Keramati; Executive Vice President RIPI; keramatim@ripi.ir No. 7 Hoveyzeh Avenue, Sohrevardi Street, Tehran</li> </ul>

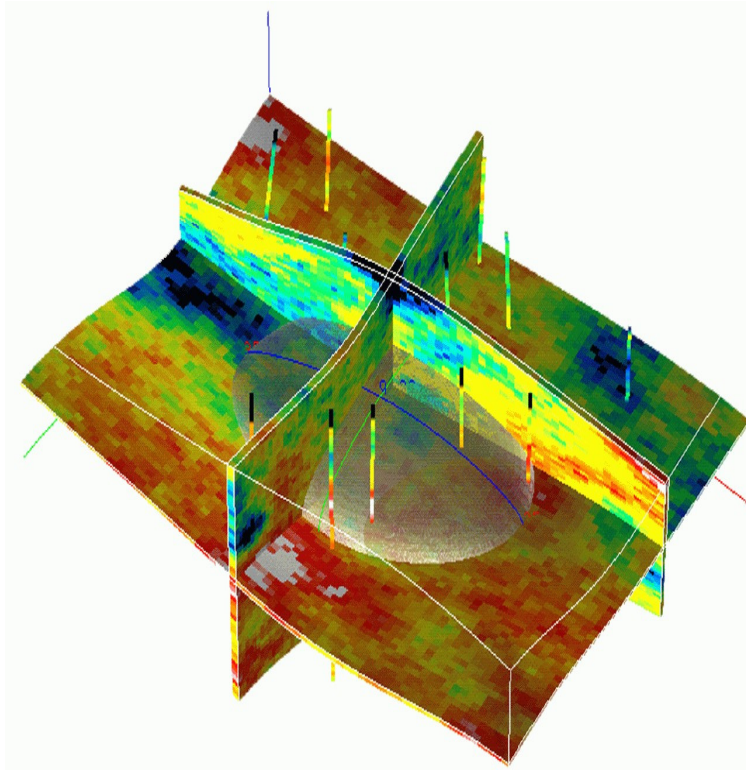


## References Iran (2/3)

Client	Field Name	Project Description	Ended in	Client contact
RIPI (subsidiary of National Iranian Oil Company)	Azadegan	<ul style="list-style-type: none"> <li>Update of Static model with new seismic/geological/petrophysical data</li> <li>Update of existing dynamic simulation model, based on updated static model</li> </ul>	<ul style="list-style-type: none"> <li>2006</li> </ul>	<ul style="list-style-type: none"> <li>Dr. Mohammad Keramati; Executive Vice President RIPI; keramatim@ripi.ir No. 7 Hoveyzeh Avenue, Sohrevardi Street, Tehran</li> </ul>
R&D Of National Iranian Oil Company	Karanj/Parsi	<ul style="list-style-type: none"> <li>Integration of natural fractures into dynamic reservoir model/simulation</li> <li>Elaboration of various development scenarios</li> </ul>	<ul style="list-style-type: none"> <li>2007</li> </ul>	<ul style="list-style-type: none"> <li>Dr. Mohammad Emadi; Member of the board of National Iranian Oil Company; emadi@nioc-randd.org; No. 7 Hoveyzeh Avenue, Sohrevardi Street, Tehran</li> </ul>
RIPI (subsidiary of National Iranian Oil Company)	Darquain/Juffair	<ul style="list-style-type: none"> <li>Reinterpretation of Seismic Data</li> <li>Reinterpretation of Petrophysical Data</li> <li>Reinterpretation of Geology</li> <li>Set-up of Static Geomodel based on reinterpreted Data</li> <li>Set-up of Dynamic Simulation Model</li> <li>History Match,</li> <li>Elaboration of Development Scenarios</li> </ul>	<ul style="list-style-type: none"> <li>2007</li> </ul>	<ul style="list-style-type: none"> <li>Dr. Mohammad Keramati; Executive Vice President RIPI; keramatim@ripi.ir No. 7 Hoveyzeh Avenue, Sohrevardi Street, Tehran</li> </ul>

## References Iran (3/3)

Client	Field Name	Project Description	Ended in	Client contact
RIPI (subsidiary of National Iranian Oil Company)	Naftshahr/ Sarajeh	<ul style="list-style-type: none"> <li>• Reinterpretation of Seismic Data</li> <li>• Reinterpretation of Petrophysical Data</li> <li>• Reinterpretation of Geology</li> <li>• Set-up of Static Geomodel based on reinterpreted Data</li> <li>• Set-up of Dynamic Simulation Model</li> <li>• History Match,</li> <li>• Elaboration of Development Scenarios</li> <li>• Detailing of Master Development Plan</li> </ul>	<ul style="list-style-type: none"> <li>• 2008</li> </ul>	<ul style="list-style-type: none"> <li>• Dr. Mohammad Keramati; Executive Vice President RIPI; keramatim@ripi.ir No. 7 Hoveyzeh Avenue, Sohrevardi Street, Tehran</li> </ul>
RIPI (subsidiary of National Iranian Oil Company)	Balal	<ul style="list-style-type: none"> <li>• Reinterpretation of Seismic Data</li> <li>• Reinterpretation of Petrophysical Data</li> <li>• Reinterpretation of Geology</li> <li>• Set-up of Static Geomodel based on reinterpreted Data</li> <li>• Set-up of Dynamic Simulation Model</li> <li>• History Match,</li> <li>• Elaboration of Development Scenarios</li> <li>• Detailing of Master Development Plan</li> </ul>	<ul style="list-style-type: none"> <li>• 2008</li> </ul>	<ul style="list-style-type: none"> <li>• Dr. Mohammad Keramati; Executive Vice President RIPI; keramatim@ripi.ir No. 7 Hoveyzeh Avenue, Sohrevardi Street, Tehran</li> </ul>



References USA

References Europe

References Iran

**References Libya**

References Russia

## References Libya (1/3)

Client	Field Name	Project Description	Ended in	Client contact
Veba Oil	Augila	<ul style="list-style-type: none"> <li>• Reinterpretation of Seismic Data</li> <li>• Reinterpretation of Petrophysical Data</li> <li>• Reinterpretation of Geology</li> <li>• Set-up of Static Geomodel based on reinterpreted Data</li> <li>• Set-up of Dynamic Simulation Model</li> <li>• History Match,</li> <li>• Elaboration of Development Scenarios</li> </ul>	<ul style="list-style-type: none"> <li>• 2006</li> </ul>	<ul style="list-style-type: none"> <li>• Abdulwahab El Naami; Head of Reservoir Department; +218-91-219 0711; P.O. Box 690, Bashir Saadai Street, Janet El Arif, 1<sup>st</sup> September Junction, Tripoli</li> </ul>
Veba Oil	Amal	<ul style="list-style-type: none"> <li>• Reinterpretation of Seismic Data</li> <li>• Reinterpretation of Petrophysical Data</li> <li>• Reinterpretation of Geology</li> <li>• Set-up of Static Geomodel based on reinterpreted Data</li> <li>• Set-up of Dynamic Simulation Model</li> <li>• History Match,</li> <li>• Elaboration of Development Scenarios</li> </ul>	<ul style="list-style-type: none"> <li>• 2006</li> </ul>	<ul style="list-style-type: none"> <li>• Abdulwahab El Naami; Head of Reservoir Department; +218-91-219 0711; P.O. Box 690, Bashir Saadai Street, Janet El Arif, 1<sup>st</sup> September Junction, Tripoli</li> </ul>

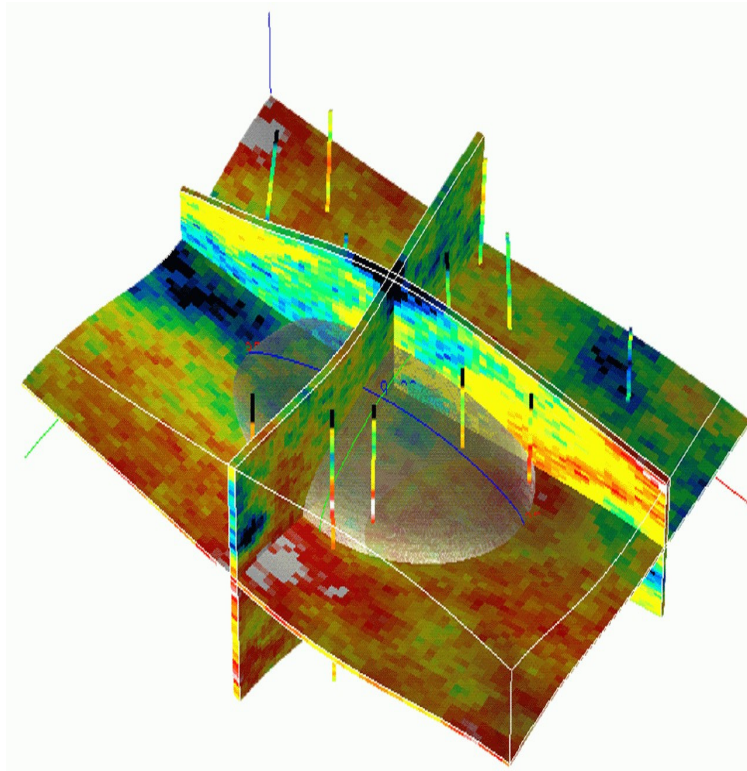
## References Libya (2/3)

Client	Field Name	Project Description	Ended in	Client contact
AGOCO – Arabian Gulf Oil Company	Kotla	<ul style="list-style-type: none"> <li>• Reinterpretation of Seismic Data</li> <li>• Reinterpretation of Petrophysical Data</li> <li>• Reinterpretation of Geology</li> <li>• Set-up of Static Geomodel based on reinterpreted Data</li> <li>• Set-up of Dynamic Simulation Model</li> <li>• History Match,</li> <li>• Elaboration of Development Scenarios</li> </ul>	<ul style="list-style-type: none"> <li>• 2008</li> </ul>	<ul style="list-style-type: none"> <li>• Yousef Gherryo; Head of Reservoir Department; +218-61-222 89 31 3583; P.O. Box 263, Benghazi</li> </ul>
Zueitina Oil Company	Hakim	<ul style="list-style-type: none"> <li>• Reinterpretation of Seismic Data</li> <li>• Reinterpretation of Petrophysical Data</li> <li>• Reinterpretation of Geology</li> <li>• Set-up of Static Geomodel based on reinterpreted Data</li> <li>• Set-up of Dynamic Simulation Model</li> <li>• History Match,</li> <li>• Elaboration of Development Scenarios</li> </ul>	<ul style="list-style-type: none"> <li>• 2009</li> </ul>	<ul style="list-style-type: none"> <li>• Mohammad Elghmari; Head of Reservoir Department; +218-21-333 8011-14; Sidi Issa Street; P.O. Box 2134, Tripoli</li> </ul>

## References Libya (3/3)

Client	Field Name	Project Description	Ended in	Client contact
Akakus Oil Operation (Local subsidiary of REPSOL)	AHM	<ul style="list-style-type: none"> <li>• Reinterpretation of Seismic Data</li> <li>• Reinterpretation of Petrophysical Data</li> <li>• Reinterpretation of Geology</li> <li>• Set-up of Static Geomodel based on reinterpreted Data</li> <li>• Set-up of Dynamic Simulation Model</li> <li>• History Match,</li> <li>• Elaboration of Development Scenarios</li> </ul>	<ul style="list-style-type: none"> <li>• 2009</li> </ul>	<ul style="list-style-type: none"> <li>• Abdulmajid Naas; Head of Reservoir Department; +218-21-480 2630-39; EI-Tahaddi Street; P.O. Box 91987, Tripoli</li> </ul>
NOC (National Oil Company of Libya)	Farigh/North Gialo	<ul style="list-style-type: none"> <li>• Reinterpretation of Seismic Data</li> <li>• Reinterpretation of Petrophysical Data</li> <li>• Reinterpretation of Geology</li> <li>• Set-up of Static Geomodel based on reinterpreted Data</li> <li>• Set-up of Dynamic Simulation Model</li> <li>• History Match,</li> <li>• Unitization (i.e. determination of which party has a right to develop which part of a shared formation)</li> </ul>	<ul style="list-style-type: none"> <li>• 2010</li> </ul>	<ul style="list-style-type: none"> <li>• Dr. Mahmud Walid; Managing Director; P.O. Box 6501; Hay Al, Andalus; Tripoli</li> </ul>

# Agenda



References USA

References Europe

References Iran

References Libya

**References Russia**

## References Russia (1/1)

Client	Field Name	Project Description	Ended in	Client contact
Krasnoyarsk-Gas (local Gazprom subsidiary)	Soba	<ul style="list-style-type: none"> <li>• Reinterpretation of Seismic Data</li> <li>• Reinterpretation of Petrophysical Data</li> <li>• Reinterpretation of Geology</li> <li>• Set-up of Static Geomodel based on reinterpreted Data</li> <li>• Set-up of Dynamic Simulation Model</li> <li>• History Match,</li> <li>• Elaboration of Development Scenarios</li> </ul>	<ul style="list-style-type: none"> <li>• 2009</li> </ul>	<ul style="list-style-type: none"> <li>• Dmitriy Tsykalov; Managing Director; dtsykalov@rambler.ru; Komsomolskiy Prospekt, 1-8; Krasnoyarsk, 660036</li> </ul>
Siberian Federal University (SFU)	N.A.	<ul style="list-style-type: none"> <li>• Design of the curriculum for the Academic Master Program of Petroleum Engineering at the SFU</li> <li>• Design of the curriculum of 4 specializations</li> <li>• Elaboration of entire series of corresponding textbooks, presentations and exams</li> </ul>	<ul style="list-style-type: none"> <li>• 2009</li> </ul>	<ul style="list-style-type: none"> <li>• Prof. Vyatcheslav Vasiliev; Vice Rector Siberian Federal University; vvg@gold.sfu-kras.ru; 79 Svobodny Prospect; Krasnoyarsk; 660041</li> </ul>
Irkutsk Geofizika	N.A.	<ul style="list-style-type: none"> <li>• Elaboration of technical requirements and corresponding investment volumes for international growth strategy</li> </ul>	<ul style="list-style-type: none"> <li>• 2009</li> </ul>	<ul style="list-style-type: none"> <li>• Sergey Zinoviev; Managing Director; s_zinoviev@inbox.ru</li> </ul>



## Contacts

**K & K OIL AND GAS GmbH**

**K & K OIL AND GAS GmbH**  
Kurbadstrasse 8  
1100 Vienna  
Austria

Mail to: [office@kk-oil.com](mailto:office@kk-oil.com)  
Web: [www.kk-oil.com](http://www.kk-oil.com)

**K & K OIL AND GAS Limited**  
3rd Floor, 14 Hanover Street  
London W1S 1YH  
United Kingdom

Mail to: [office@kk-oil.com](mailto:office@kk-oil.com)  
Web: [www.kk-oil.com](http://www.kk-oil.com)

**K & K OIL AND GAS Limited**  
3905 Two Exchange Square,  
Suite No. 8558  
8 Connaught Place  
Central  
Hong Kong

Mail to: [office@kk-oil.com.hk](mailto:office@kk-oil.com.hk)  
Web: [www.kk-oil.com.hk](http://www.kk-oil.com.hk)